




 Celsius
Performance Connect

TELEMETRIC SYSTEM FOR CONTINUOUS
GASTROINTESTINAL TEMPERATURE
MONITORING

QUICK START GUIDE

CE

Dear customers,

thank you for purchasing the  eCelsius system

This quick start guide is designed to introduce you the basic functions of the system.

Hereby you will find some recommendations related to its first use.





**This document does not replace the user manual.
For an optimal use of the device, we recommend that you take note of all instructions in the user manual.**

The system is not claimed MRI compatible, it is imperative that the subject ingesting a pill does not undergo any MRI exam.

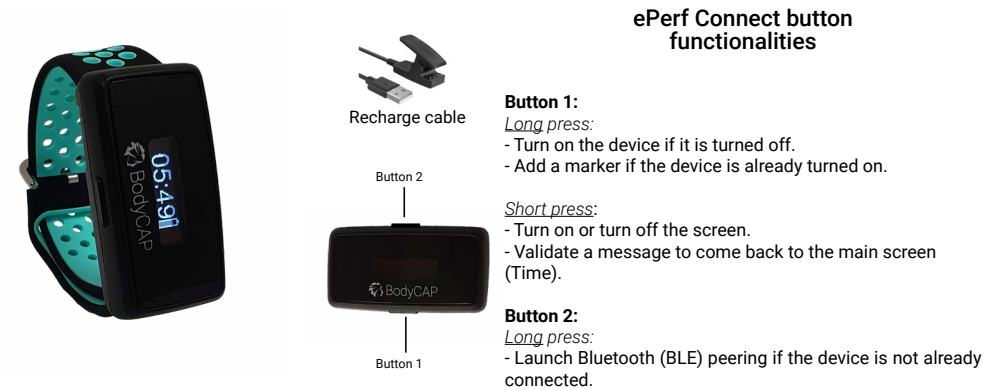
The subject must wear the wrist band supplied with the system showing that he is wearing an electronic device non compatible with the exposure to a strong magnetic field.

The wrist band is fixed just before the ingestion and must only be removed after the last pill ejection.

The User Guide is available as a PDF version (Adobe Reader needed) on the USB memory stick provided with the system.

BodyCap may provide the user manual in paper format within 7 days if necessary.

SYSTEM COMPONENTS



ePerf Connect button functionalities

Button 1:

- Long press:*
- Turn on the device if it is turned off.
 - Add a marker if the device is already turned on.

Short press:

- Turn on or turn off the screen.
- Validate a message to come back to the main screen (Time).

Button 2:

- Long press:*
- Launch Bluetooth (BLE) peering if the device is not already connected.

The ePerf Connect device

The ePerf Connect device aims to communicate by radio frequency with the eCelsius Performance capsule to retrieve temperature data.



ePerf Mobile application

The application allows to retrieve and to display the data collected by the eCelsius Performance Connect system. It is available via the Google Play Store and can be installed on an Android smartphone or tablet.



Capsule eCelsius Performance

Once activated through the activator, it collects and sends data to the ePerf Connect device.



Signaletic bracelet

It is attached to the wrist before ingestion of a capsule and then removed after the expulsion of the last capsule.



Activator

Allow to activate
eCelsius pills
Performance

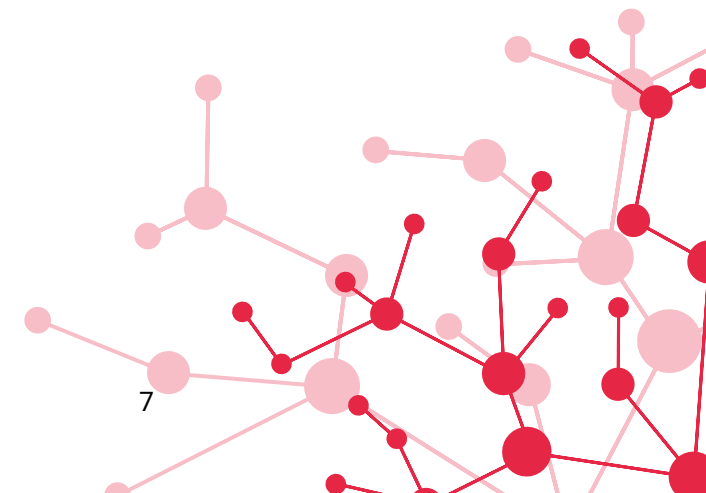
BodyCAP USB Stick

It includes all the technical documentation relating to the system (user manual, quick start guide, CE declaration of conformity, etc.).



First use

Basic Instructions



These instructions will allow you to boot your system.

To be aware of all the features, the use claims and contra-indications, please refer to the user manual included on the USB memory stick.

Before the first use of your system, you have to perform a set of operations.

1. ePerf Mobile APPLICATION SET-UP

You have to install the ePerf Mobile application on your Android smartphone or tablet before using your system.

This is an essential tool for setting up the ePerf Connect device. The ePerf Mobile application allows you to retrieve and display the data collected by the eCelsius Performance Connect system. For this you must have an Android support with a minimum configuration required:

- *Android 8 or higher*
- *Bluetooth Low Energy 4.x or 5.x*
- *Access to the "Play Store"*
- *100MB available for installing the application*
- *1024x768 for the screen resolution*

2. MATERIAL

- ePerf Mobile application installed on Android smartphone or tablet
- ePerf Connect device and its charging cable
- eCelsius Performance capsule
- Activator and its dedicated USB cable

3. CHECK-LIST BEFORE INGESTION

ePerf Connect device:

- Sufficient battery level.
- Date and time of the device.
- Association with the ePerf Mobile application.
- Profile created for each subject monitored through the application.

Capsule:

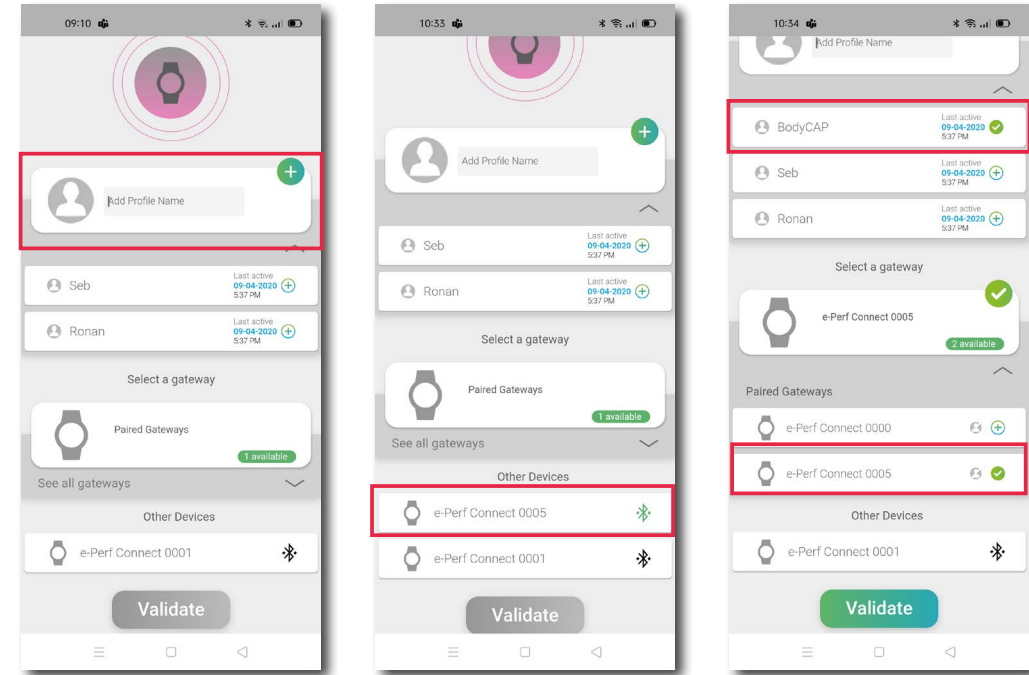
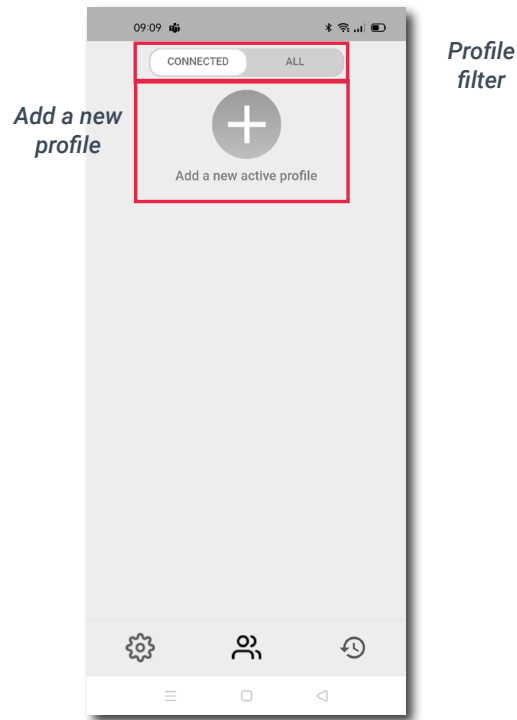
- Disposable.
- Activated and associated with the ePerf Connect device through the activator.
- Signalitic bracelet worn to the wrist.

4. SET UP

Here is a summary of the steps before ingesting a capsule:

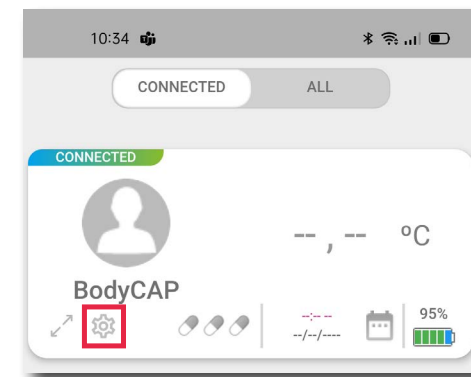
- Switch on the ePerf Connect device through a long press on button 1 located under the BodyCAP logo.
- Charge it if the battery level is low.
- Install the ePerf Mobile application on your Android device through the Google Play store and launch the application.
- Activate the Bluetooth function and the location of the Android device and pair the ePerf Connect device with the ePerf Mobile application.

1- Create a profile by clicking on the “+” button. A profile corresponds to a user that has to be monitored with an ePerf Connect device.

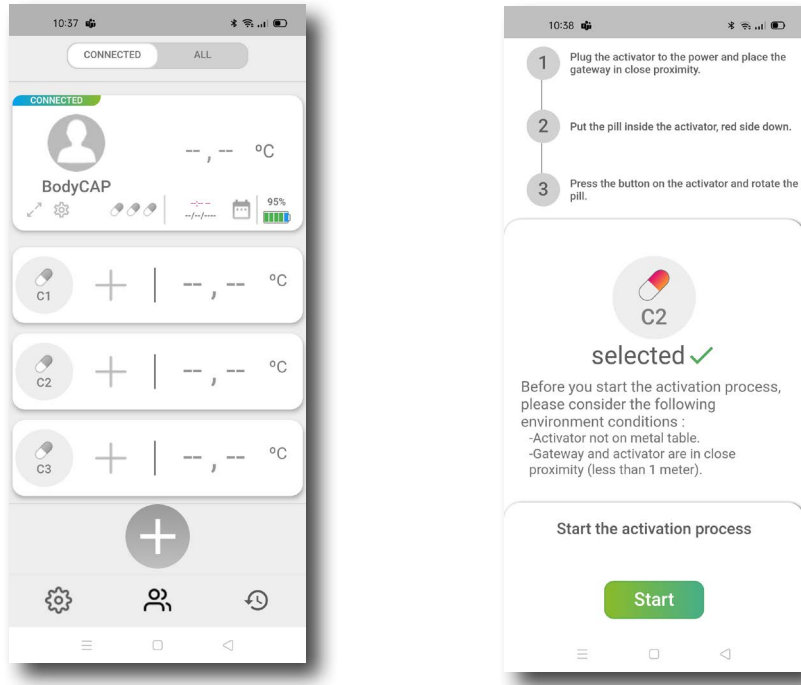


2 - Associate an existing ePerf Connect device or pair a new device with the application. To pair a new device, you have to make a long press on the button 2 (Opposite to the BodyCap logo) until the message “Associat. BLE» appears. On ePerf Mobile, a green ePerf Connect XX.XX reference should appear, indicating that this device is available for association via Bluetooth. Once selected, you must validate the pairing by entering, in the ePerf Mobile application, the code displayed on the screen of the ePerf Connect device. The device will then appear in the list of available paired devices.

- Configuration of the ePerf Connect device through the ePerf Mobile application: date & time, operating channel, temperature thresholds setting, measurement periods setting, comments adding...



- A capsule can be associated with the ePerf Connect device. Through the ePerf Mobile application, select the profile created - unfold the profile - and choose the location of the capsule to be associated by pressing the corresponding “+” and follow the instructions of the application.



The eCelsius Performance capsule is now ready to be ingested by the subject, with a glass of water, to measure core temperature through the gastrointestinal tract. The signalitic bracelet (Fig. 2) has to be placed before the ingestion of the capsule. The ePerf Connect device has also be installed on the subject's wrist in order to be able to collect and transmit all the data to the application.

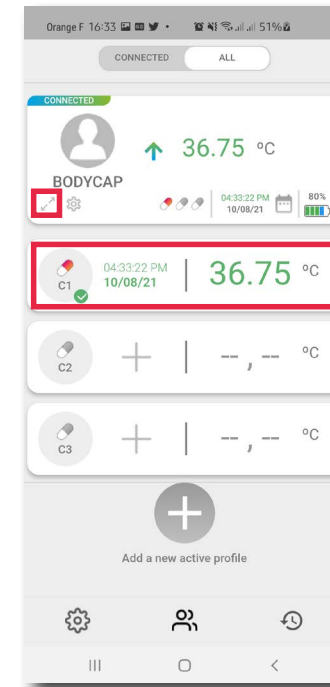
5. DATA VISUALIZATION

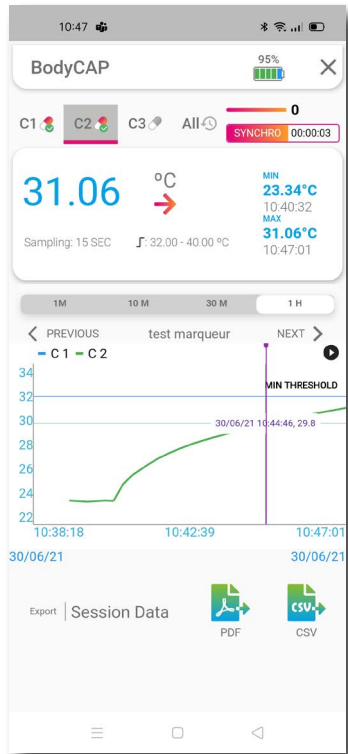
In order to consult the temperature data collected, the ePerf Connect device and the application must be able to communicate by bluetooth (BLE) and the location of the Android device must be activated.

Select the profile you want to visualize.

Capsule temperature data can also be displayed graphically.

To do so, simply click on the temperature data of one of the capsules to display the corresponding graph or on the double arrow under the name of the profile to display the graph including all the associated capsules.





6. DATA EXPORTATION AND ARCHIVE

Data exportation:

It is possible to export data all along the acquisition or retrospectively through the archive area. The possible data export formats are PDF or CSV. The file is saved in the memory of the Android device (documents / profile) and available for transfer by email.

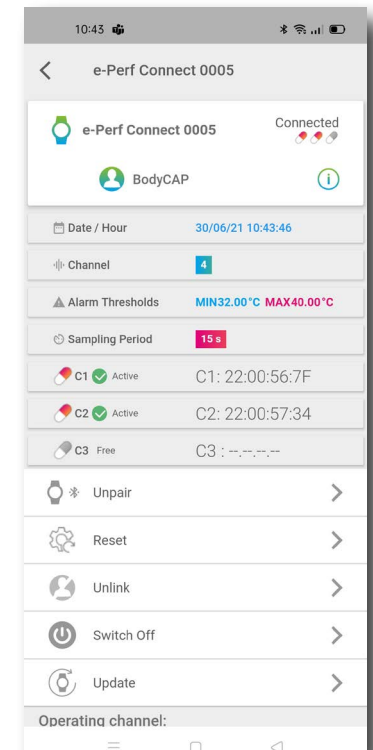
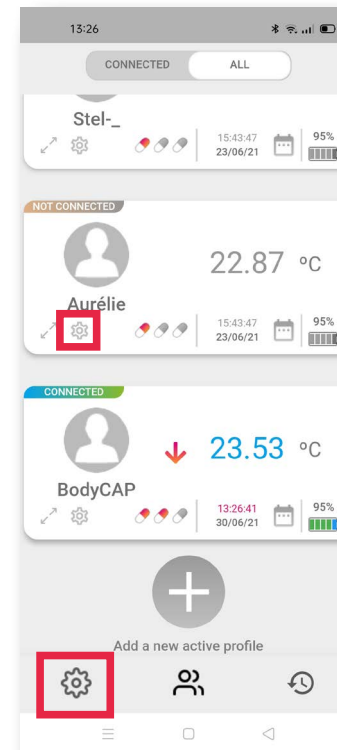
Archives management - old capsules:

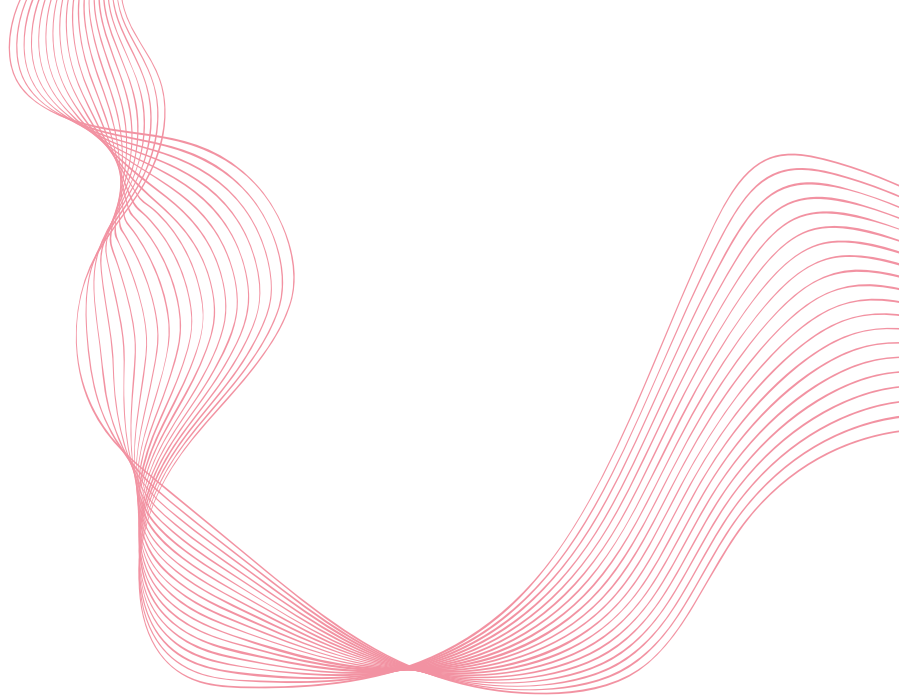
A deactivated capsule will automatically be placed in the application archive, in the corresponding "Profil" folder. The data are stored in the interface until the user erase them.

7. END OF THE MONITORING

When your monitoring with the ePerf Mobile application is over and your capsules are deactivated from the profile, several options are available to close your session through the device settings:

- Separate the profile and the device
- Unpair ePerf Connect
- Reset the device
- Turn off ePerf Connect





If you have any question related to the use of the system and you did not find the answers in the user guide, please request assistance to BodyCAP:

BODYCAP
3, rue du Docteur Laennec
14200 Hérouville St Clair
FRANCE
0033 (0)2.61.53.03.29

contact@bodycap-medical.com

www.bodycap-medical.com